

mg Billenwater

ORDINANCE NO. 2002-OR- 12

I 200224229
C2 Date 09/27/2002

**AN ORDINANCE ANNEXING 82.8852 ACRES
CONTIGUOUS TO THE CITY OF CHARLESTOWN**

WHEREAS, the municipal boundary of the City of Charlestown, Indiana, is adjacent and contiguous to certain territory, described below; and

WHEREAS, the owners of the territory described below have petitioned the Common Council for the annexation of the territory into the City of Charlestown; and

WHEREAS, the territory is adjacent to the fifth (5th) councilmanic district:

THEREFORE, Be it ordained by the Common Council of the city of Charlestown, Indiana, as follows:

1) The following described territory is hereby annexed and declared a part of the City of Charlestown, Indiana, and is assigned to the fifth (5th) councilmanic district, to wit:

A part of Illinois Grant Survey No. 96, Township of Charlestown, Clark County, Indiana, and a part of the lands in Dean DD 22-12072 described as follows:

Beginning at a brass pin at the North Corner of Survey No. 96, Thence S 40°24'00" E, a distance of 535.400 to 5/8" rebar passing a mag nail in the center of Highway 62 at 32.48 feet the TRUE PLACE OF BEGINNING; Thence S. 40°24'00" E. a distance of 994.31 feet along the dividing survey Nos. 95 & 96 to a 5/8" rebar; Thence S 49°00'00" W, a distance of 490.00 feet to a 5/8" rebar; Thence S 40°24'00"E, a distance of 550.17 feet to a 5/8" rebar passing a 5/8" rebar at 267.00 feet; Thence N 49°00'00"E, a distance of 490.00 feet to the survey line and a 5/8" rebar; Thence S 40°24'00" E, a distance of 444.14 feet along the survey line to a 8"x8" concrete monument; Thence S 47°58'30"W, a distance of 523.45 feet along a fence to a 3" steel fence post; Thence S 49°05'35"W, a distance of 1095.54 feet, passing a 5/8" rebar at 1009.37 feet along a fence to a point; Thence N 42°30'20"W, a distance of 505.68 feet to a 5/8" rebar; Thence S 49°41'06"W, a distance of 352.05 feet along a fence to a 2" steel fence post, passing a 3" steel fence post at 13.52 feet; Thence N 40°33'56" W, a distance of 235.28 feet along a fence to a 2" steel fence post; Thence S 50°19'28" W, a distance of 180.09 feet, along a fence, passing a 2" steel fence post at 146.68 feet, to a Mag Nail in the center of Charlestown Landing Road,; Thence N 39°39'42" W, a distance of 744.06 feet to a Mag Nail in Highway 62; Thence along a curve having a radius of 1909.86 feet, arc length of 466.70 feet, delta angle of 14°00'04", a chord bearing of N 16°36'14" E, and a chord length of 465.54 feet to a Mag Nail; Thence N 09°40'00" E, a distance of 650.10 feet along the centerline of Highway 62 to a Mag Nail; Thence along a curve having a radius of 954.93 feet , arc length of 161.85 feet, delta angle of 09°42'37", a chord bearing of N 14°09'35" E, and a chord length of 161.64 feet to a Mag Nail; Thence N 23°52'07" E, along the centerline of Highway 62 a distance of 152.12 feet to a point, Thence N 33°55'30"E, along the centerline of Highway 62 a distance of 170.72 feet to a point, Thence N 43°49'45" E, along the centerline of Highway 62 a distance of 189.30 feet to a point, Thence N 48°50'55"E, along the centerline of Highway 62 a distance of 76.76 feet to a point, Thence S 52°24'18"E, a distance of 276.18 feet to a railroad spike, Thence S 37°40'53" W, a distance of 3377.87 feet to a 5/8" rebar, Thence S 52°12'59" E, a distance of 234.25 feet to a 5/8" rebar, Thence N 37°40'53" E, a distance of 187.00 feet to a 5/8" rebar, Thence S 52°12'51"E, a distance of 100.00 feet to a 5/8" rebar, Thence N 37°04'21" E, a distance of 152.94 feet to a mag nail, Thence N 41°37'58" W, a distance of 66.54 feet to a mag nail, Thence N 49°49'24" E, a distance of 486.30 feet to the TRUE PLACE OF BEGINNING

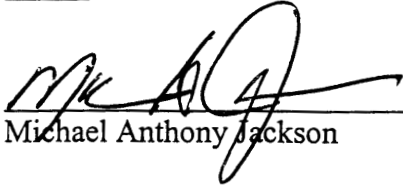
Containing 82.8852 acres.

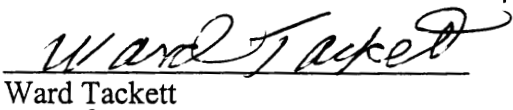
2) The boundaries of the City of Charlestown shall be, and hereby are declared to be extended so as to include all of said real estate as a part of the City of Charlestown.

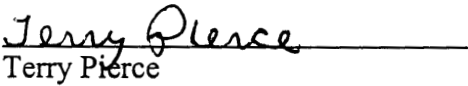
3) This ordinance shall be in full force and effect takes effect at least thirty (30) days after its publication and upon the filing required by I.C. 34-4-3-22(a).

ALL OF WHICH IS ORDAINED by the common council of the City of Charlestown on the 5th day of August 2002.

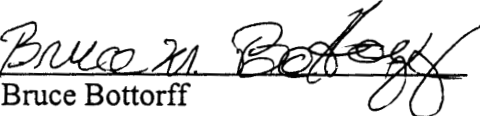
AYES


Michael Anthony Jackson


Ward Tackett


Terry Pierce


Ed Bolly


Bruce Bottorff

NAYS

Michael Anthony Jackson

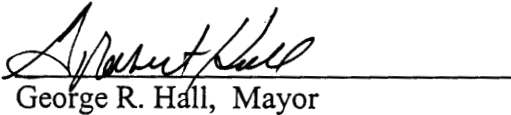
Ward Tackett

Terry Pierce

Ed Bolly

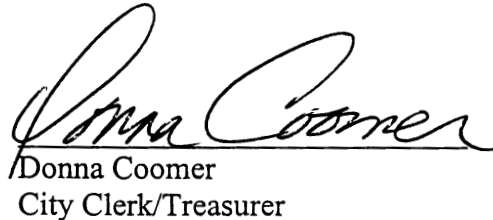
Bruce Bottorff

PRESENTED TO ME AND APPROVED THIS 5th DAY OF AUGUST 2002, BY:


George R. Hall, Mayor

ATTEST:

8/5/02
Date


Donna Coomer
City Clerk/Treasurer

DULY ENTERED FOR TAXATION
SUBJECT TO FINAL ACCEPTANCE
FOR TRANSFER

SEP 27 2002


AUDITOR CLARK COUNTY

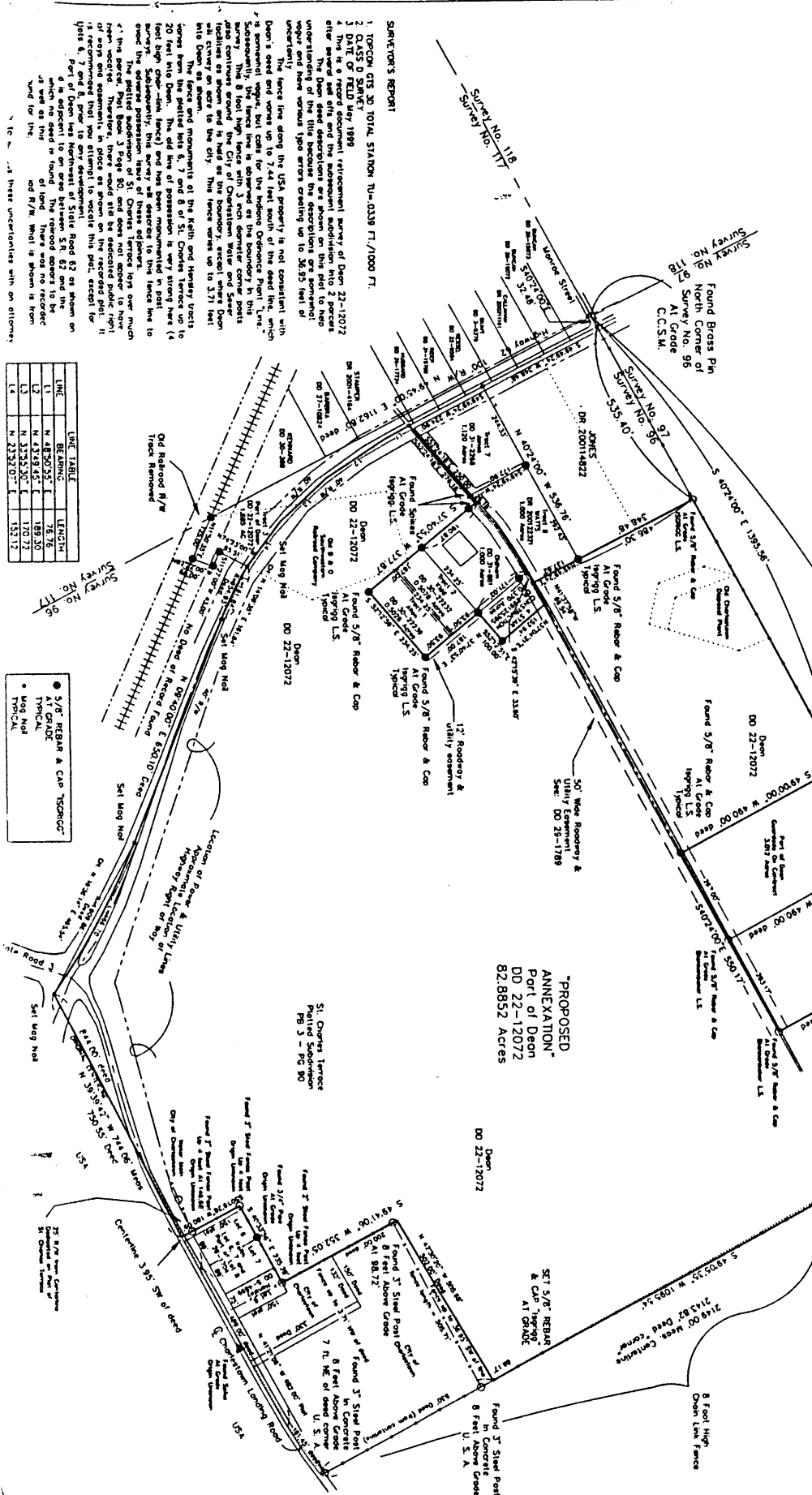
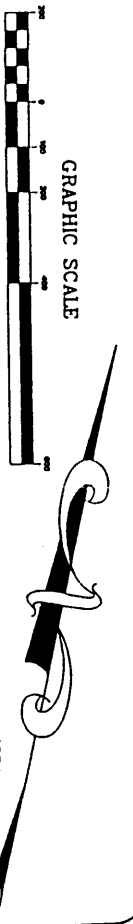
F I L E D

SEP 27 2002


Clerk Clark Circuit Court

A part of the Bruce Carl Survey 98, Township of Charleston, DeWitt County, Indiana, and a part of the lands in DeWitt DD 22-12072 described as follows:

Beginning at a brass pin at the North Corner of Survey No. 98,
 Thence S 40°24'00" E, a distance of 335.40 feet to a 5/8" rebar passing a mag nail in the center of Highway 62 at 32.48 feet the TRUE PLACE OF BEGINNING;
 Thence S 40°24'00" E, a distance of 480.00 feet along the existing survey line, 98 & 96 to a 5/8" rebar;
 Thence S 40°24'00" W, a distance of 480.00 feet to a 5/8" rebar passing a 5/8" rebar at 387.00 feet;
 Thence S 40°24'00" E, a distance of 480.00 feet to a 5/8" rebar passing a 5/8" rebar;
 Thence S 40°24'00" E, a distance of 444.15 feet along the survey line to a 6" x 6" concrete monument;
 Thence S 40°24'00" W, a distance of 323.45 feet along a fence to a 3" steel fence post;
 Thence S 40°24'00" W, a distance of 1053.54 feet, passing a 5/8" rebar at 1008.37 feet along a fence to a point;
 Thence N 42°30'20" W, a distance of 505.88 feet to a 5/8" rebar at 571.72 feet along a fence to a point;
 Thence S 40°24'00" W, a distance of 325.03 feet along a fence to a 3" steel fence post, passing a 3" steel fence post at 1352 feet;
 Thence S 50°17'20" N, a distance of 180.00 feet, along a fence, passing a 2" steel fence post at 148.88 feet, to a mag nail in the center of Charleston
 Lumber Road;
 Thence N 38°39'42" W, a distance of 744.00 feet to a mag nail in Highway 62;
 Thence along a curve having a radius of 1808.00 feet, arc length of 466.70 feet, delta angle of 14°00'04", a chord bearing of N 16°38'14" E, and a chord
 length of 853.00 feet, to a mag nail 650.10 feet along the centerline of Highway 62, to a mag nail;
 Thence along a curve having a radius of 654.83 feet, arc length of 161.85 feet, delta angle of 09°42'37", a chord bearing of N 14°09'35" E, and a chord
 length of 181.84 feet to a mag nail;
 Thence N 23°32'07" E, along the centerline of Highway 62 a distance of 1527.12 feet to a point;
 Thence N 33°35'30" E, along the centerline of Highway 62 a distance of 187.32 feet to a point;
 Thence N 48°49'45" E, along the centerline of Highway 62 a distance of 187.32 feet to a point;
 Thence S 52°24'18" E, a distance of 376.18 feet to a rebar stake;
 Thence S 37°40'55" W, a distance of 317.87 feet to a 5/8" rebar;
 Thence S 52°12'39" E, a distance of 234.25 feet to a 5/8" rebar;
 Thence S 37°40'55" E, a distance of 187.00 feet to a 5/8" rebar;
 Thence S 52°12'39" E, a distance of 100.00 feet to a 5/8" rebar;
 Thence S 52°12'39" E, a distance of 100.00 feet to a 5/8" rebar;
 Thence N 41°37'58" W, a distance of 66.54 feet to a mag nail;
 Thence N 49°49'24" E, a distance of 486.30 feet to the TRUE PLACE OF BEGINNING.

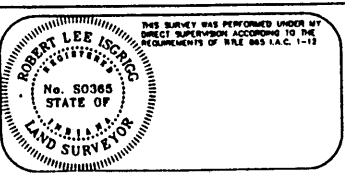


STATIONER'S REPORT
 1. TOPGRAPH, CTS 30 TOTAL STATION, TU-0239 FT./1000 FT.
 2. DATE OF FIELD SURVEY 1989
 3. DATE OF FIELD SURVEY 1989
 4. This is a record document (retrocommissioned) under the provisions of the Indiana Survey Law, Chapter 36, Article 10, Section 1-2, of the Indiana Code, which requires that a survey be recorded in the public records of the county in which it is made. This document is a record of the survey and is not a deed. It is not intended to create any new rights or obligations, and it is not to be construed as such. It is a true and correct copy of the original survey as conducted by the surveyor and his assistants, and it is not to be altered or changed in any way. It is a true and correct copy of the original survey as conducted by the surveyor and his assistants, and it is not to be altered or changed in any way. It is a true and correct copy of the original survey as conducted by the surveyor and his assistants, and it is not to be altered or changed in any way.

LINE	BEARINGS	LENGTH
1	N 48°50'55" E	78.76
2	N 43°18'45" E	189.50
3	N 33°53'50" E	150.72
4	N 23°27'07" E	151.72

5/8" REBAR & CAP "STANDARD"
 AT GRADE
 TYPICAL
 MAG NAIL
 TYPICAL

DRAWN BY VB
 CHECKED BY R.L.I.
 SCALE 1"=200'
 DATE 6-21-99
 REVISED 8-05-2002
 JOB NO. C3800009.



PURPOSED ANNEXATION CITY OF CHARLESTOWN DARNELL & DEAN

BOB ISGRIGG & ASSOCIATES
 CIVIL ENGINEERS / LAND SURVEYORS
 518 E. COURT AVENUE JEFFERSONVILLE, IN 47130
 (812) 285-1011 Phone 1 (812) 285-1012 Fax
<http://members.oye.net/~isgrigg>