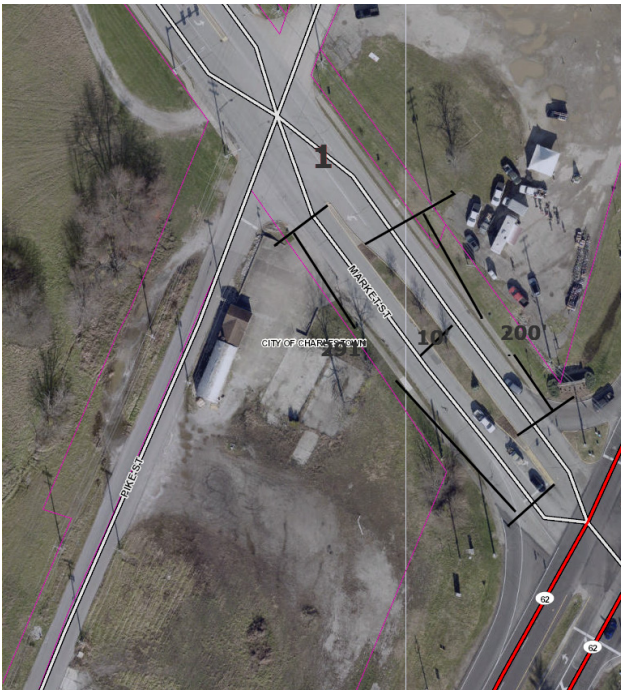
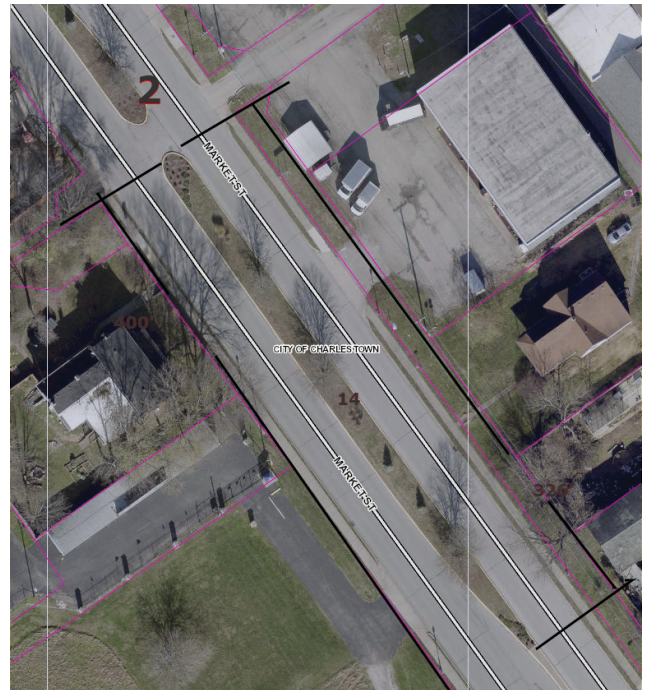


Overview of Charlestown Medians from IN-62 to Pleasant Street



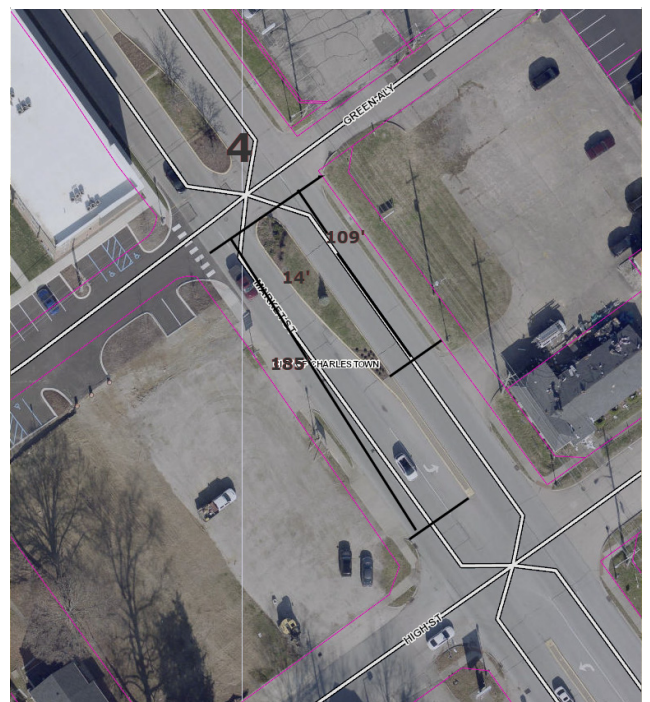
1 (IN-62 to Pike Street)
Length, 291-feet (200-feet of soil);
Width, 10-feet at widest point



2 (Pike Street to Walnut Street)
Length, 400-feet (326-feet of soil);
Width, 14-feet at widest point

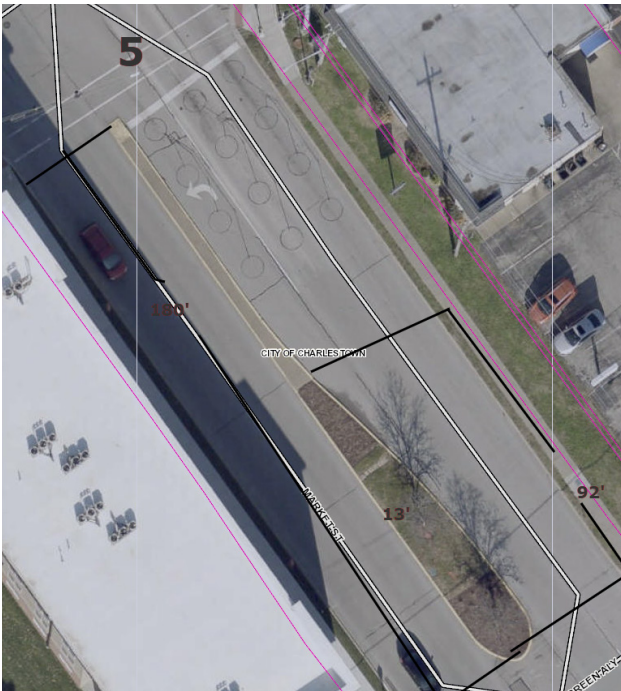


3 (Walnut Street to High Street)
Length, 190-feet (108-feet of soil);
Width, 12-feet at widest point

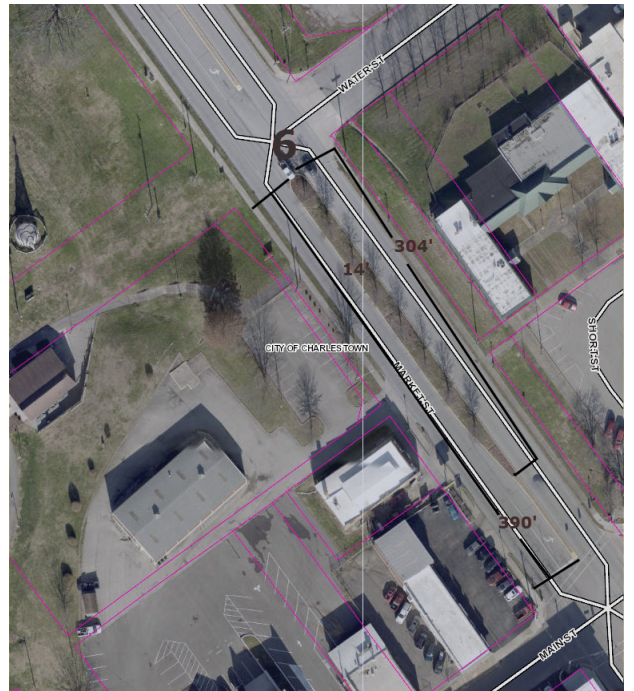


4 (High Street to Green Alley)
Length, 185-feet (109-feet of soil);
Width, 14-feet at widest point

Overview of Charlestown Medians from IN-62 to Pleasant Street



5 (Green Alley to Main Street)
Length, 180-feet (92-feet of soil);
Width, 13-feet at widest point



6 (Main Street to Water Street)
Length, 390-feet (304-feet of soil);
Width, 14-feet at widest point



7 (Water Street to Thompson)
Length, 401-feet (282-feet of soil);
Width, 14-feet at widest point



8 (Thompson Street to Pleasant Street)
Length, 360-feet (277-feet of soil);
Width, 11-feet at widest point