



BOW Presentation

April 7th, 2021 at 9:00am

Charlestown 5-Year Parks & Recreation Master Plan



Agenda

1. Planning Process
2. Current System Inventory Snapshot
3. Public Input
4. Major Trends
5. Key Analysis Takeaways
6. Recommendations



Planning Process



PHASE 1: INVENTORY &
DATA COLLECTION



PHASE 2: RESEARCH &
ANALYSIS



PHASE 3: RESULTS &
RECOMMENDATIONS

Current Inventory Snapshot



Total Parks Area: 46 Acres
Trails: 0 Connective Trail Mileage

Public Input

Public Input was sought through steering committee meetings, stakeholder interviews and public survey.



23

Stakeholder Interviews

- Charlestown Parks Department
- Charlestown Redevelopment Commission
- Charlestown City Council
- Charlestown's Legislative Youth Advisor
- Charlestown High School
- Charlestown Middle School
- Charlestown Residents
- Local Parents of Children with Disabilities
- Local Running Club
- Local Little League
- Clark County 4-H Youth Development
- Clark County Library System
- Clark County Residents
- Indiana Department of Natural Resources -
Charlestown State Park/Falls of the Ohio
- Align Southern Indiana - 5-County Regional Park and
Trail Vision Plan
- National Park Service - Rivers, Trails & Conservation
Assistance - Ohio River Recreational Trail



Key Takeaways

- **Accessibility:** Inclusive amenities and programming
- **Aquatics:** Indoor or outdoor aquatics facility
- **Civic Center:** Functioning community center with programmable space
- **Trails:** Trails throughout the community and existing parks
- **Programming:** More programming. Possible partnerships with Clark County Library System & Clark County 4-H Extension Office.

507

Public Survey Responses

A survey with 15 questions was developed and distributed on-line and at locations around the community.

The survey was made available to the public on December 16th, 2020 and was closed February 4th, 2021.

A total of 507 people responded to the survey online.

Key Takeaways

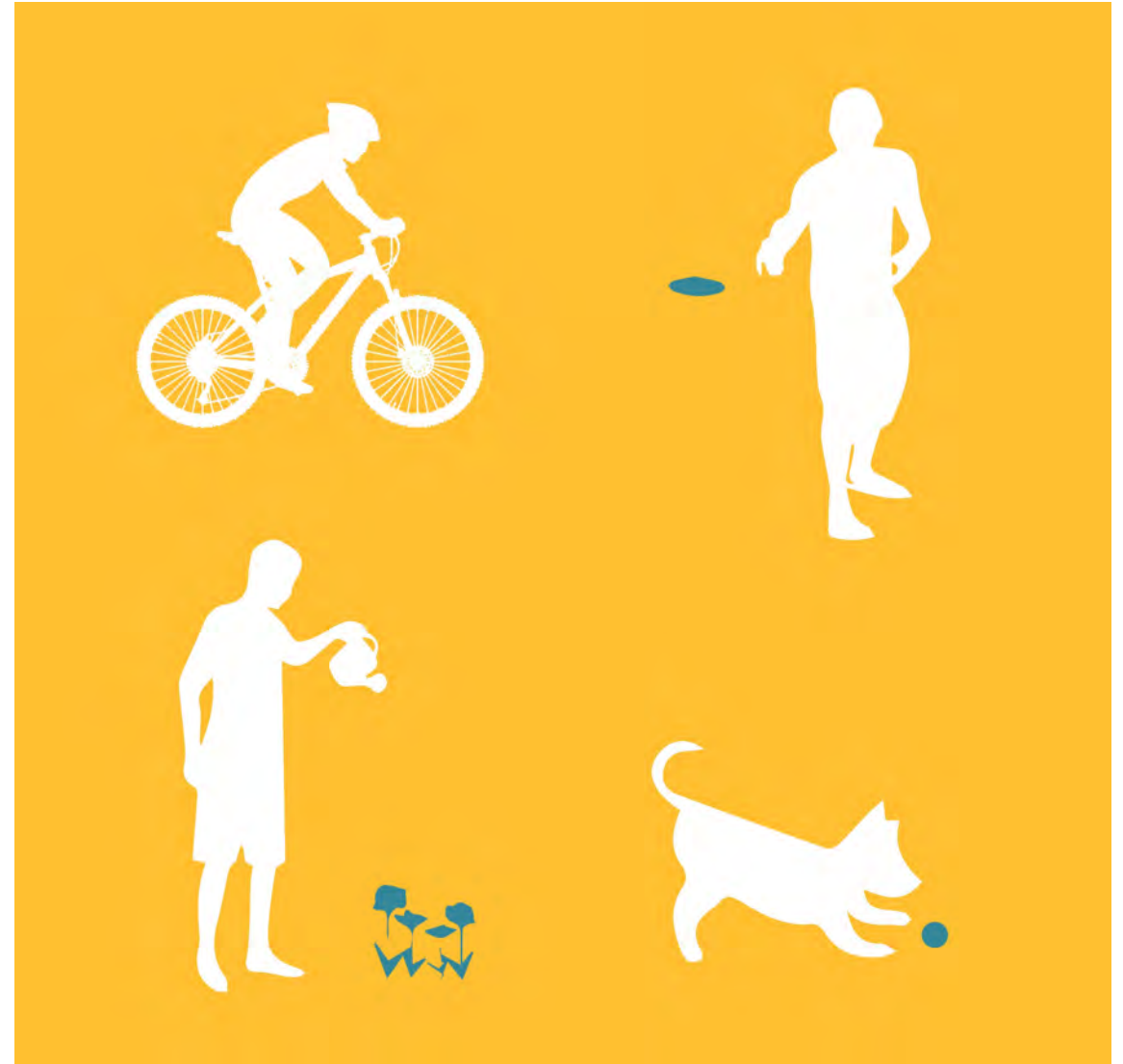
1. Disc golf course!
2. Pool facility
3. Trails and sidewalks
4. Sports facilities and sports leagues
5. Programming for all age groups, special needs programming and sports programming
6. Indoor all year recreation facilities and activities
7. More community events such as concerts, festivals, community service events, family and non-family events and exercise events



Major Trends

For comparison benchmarks we look to three main resources:

- NRPA: National Recreation & Parks Association
- TPL: Trust for Public Land
- SCORP: Statewide Comprehensive Outdoor Recreation Plan



Key Analysis Takeaways

Park System Size

- Does not meet national or local standards and has a deficit ranging from 63.3 acres (NRPA) to 136.2 acres (SCORP).

Outdoor Facilities

- Based on standards, the parks are deficient in tennis courts, youth soccer fields, rectangular multi-purpose fields and adult baseball diamond fields.

Indoor Facilities

- Based on standards, the parks is deficient in all categories for indoor facilities. Most notable is recreation center, ice rink, performance amphitheater and nature center.

Trails & Greenways

- Overall, the community does not have any connective trail mileage.



Key Analysis Takeaways

Location of Services

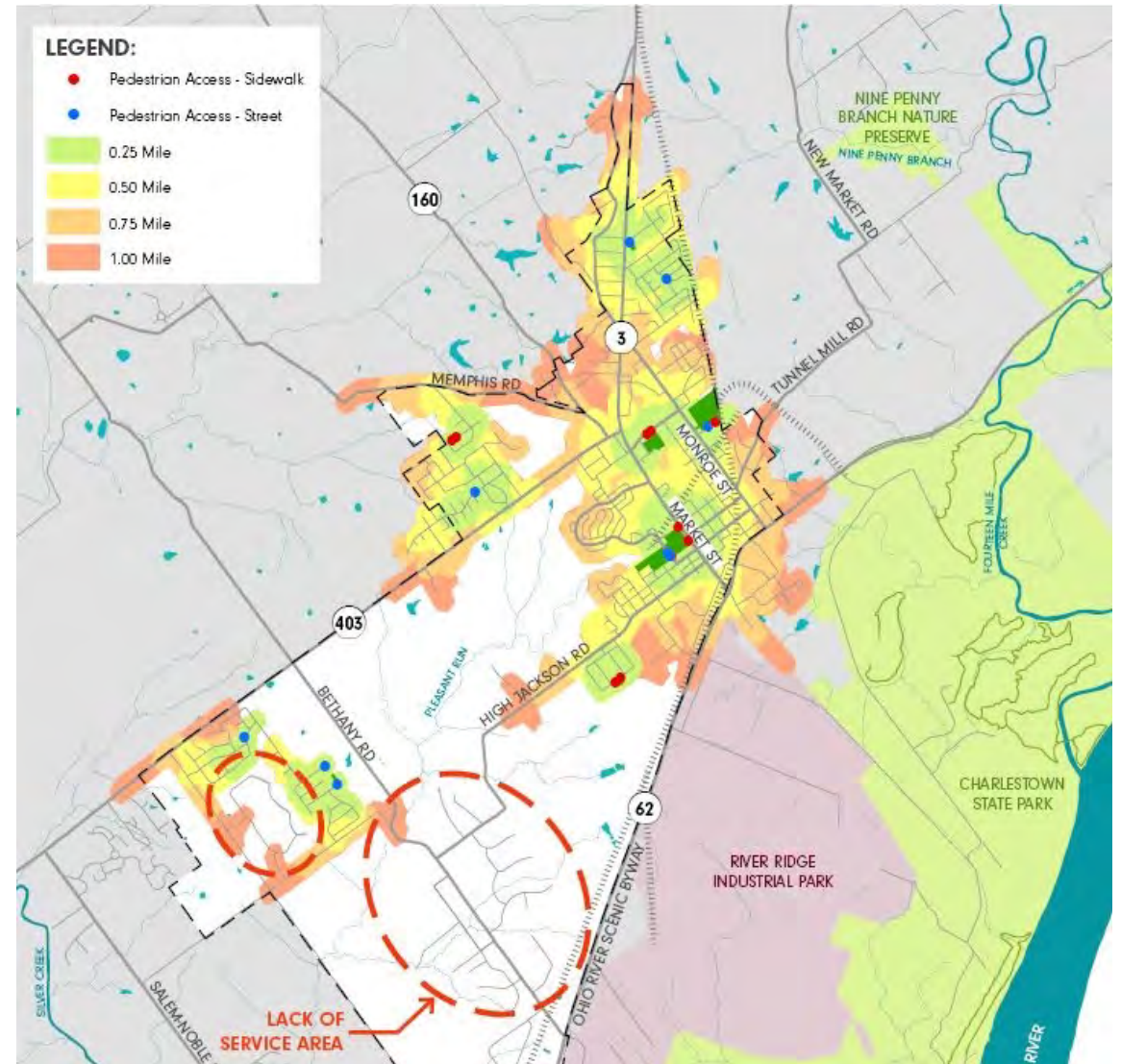
- Based on walkability mapping, park facilities are lacking in the southwest region of the city

Programming

- The parks department hosts a number a larger community events and has been very successful with participation. In order to diversify the programming offerings, teaming with other established groups should be considered.

Maintenance

- As the parks continue to grow and new facilities are added, the maintenance staff will need to grow as well.



Recommendations

Goals, Action Plan & Master Plan



h Lowe



Drawn from a combination of research, public input priorities, analysis and comparisons, and steering committee discussions, the system-wide goals are organized into four categories:

- Create Connectivity
- Increase Programming
- Complete Projects
- Update Policy

A photograph of two cyclists riding on a paved path. The cyclist in the foreground is wearing a light green long-sleeved shirt, dark shorts, and a black helmet. The cyclist in the background is wearing a dark long-sleeved shirt, dark shorts, and a white helmet. They are riding on a paved path that curves through a grassy area. In the background, a large steel truss bridge spans across the scene. The sky is blue with some light clouds. The overall scene is bright and sunny, suggesting a clear day.

GOAL:

Create Connectivity

- Complete a Bike, Pedestrian, and Trails Master Plan
- Get serious about addressing accessibility
- Build excitement for trails



Create Connectivity

Complete a Trails Master Plan

- Connect locally (parks, schools, library)
- Connect regionally (State Park/RRCC)
- Work with ALIGN/NPS to connect to “blue-ways” and the nearby ORG

Address Accessibility

- Complete a sidewalk assessment
- Develop a transition plan
- Assign an ADA Coordinator

Build Excitement for Trails

- Create connective trail mileage
- Build internal loop trails
- Acquire land/establish setbacks for future corridors



GOAL:

Increase Programming

- Add programming staffing and capacity
- Broaden programming to all ages and abilities
- Team with local and regional resources to expand programming opportunities



Increase Programming

Increase Programming Staffing and Capacity

- Hire programming staff
- Charge usage fees to pay for staff
- Hire interns to run summer programs

Broaden Programming to All Ages and Abilities

- Develop inter-generational programming
- Develop programming focused around music/art/sensory
- Add inclusive activities to annual events

Team with Local and Regional Resources

- Use Local/Regional Resources (4H /Library /promote surrounding community events)
- Support Charlestown Little League/task force for new leagues
- Team with Charlestown Beautification Committee for volunteers/fundraising

A young child with blonde hair in a ponytail, wearing a pink t-shirt and blue pants, is playing a xylophone on a playground. The child is standing on a green mat and is focused on the instrument. The background shows other playground equipment, including a yellow and blue structure and a green fence. The scene is brightly lit, suggesting a sunny day.

GOAL:

Complete Projects

- Add one new major facility to the parks system
- Build an accessible playground at the Family Activities Park
- Re-imagine Greenway Park
- Increase comfort and usability (shade/restrooms) in parks
- Increase public art in parks



Complete Projects

Families Activities Center

- Replace splash pad floor with aquatics tile
- Build an accessible playground
- Acquire adjacent property/extend trail

Greenway Park

- Enhance the creek corridor with native plantings/manage maintenance
- Update bridges/create loop trails and nature paths/open restrooms
- Add disc golf/public art or other passive recreation activities

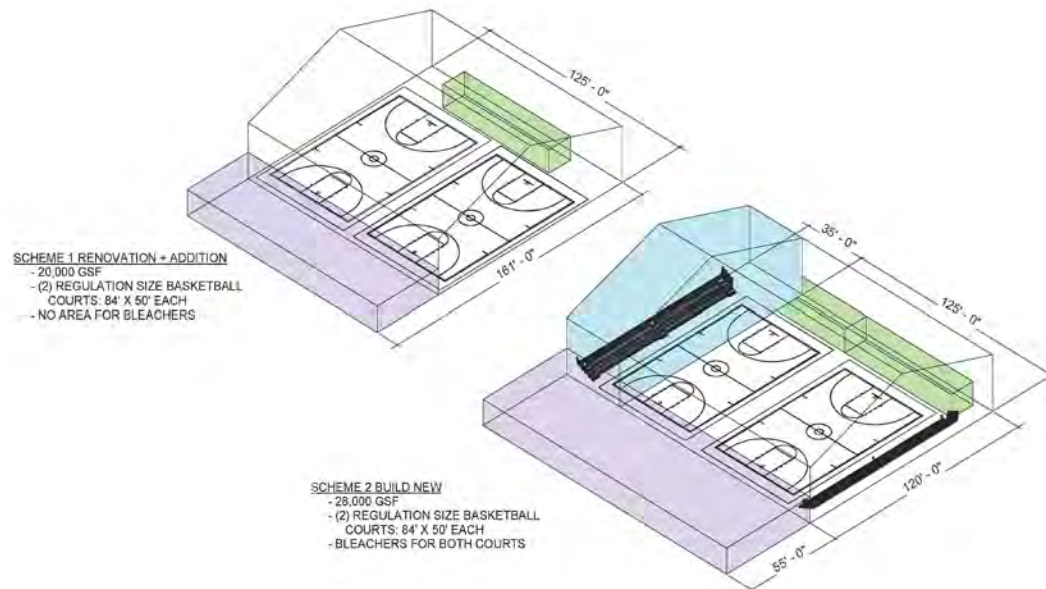
Little League Fields & Civic Center

- Renovate the Civic Center
- Reorganize/regrade the fields to resolve drainage issues
- Add a perimeter loop trail and small playground

One Major Facility

Civic Center Renovation

- Shovel-ready and a Step Ahead
- Year-Round Use and Less Staffing
- Aquatic Resources are Prevalent





GOAL:

Update Policy

- Plan for future parks and trails (master-planning and property acquisition)
- Establish guidelines for future neighborhood parks
- Consider park impact fees
- Establish a parks board
- Establish a parks foundation
- Open the dog park to the public



Complete Projects

Plan for Future Parks and Trails

- Masterplan the 100-acre parcel
- Acquire land (floodway/southwest quadrant/future sports fields)
- Reserve right-of-way for future trail corridor

Establish Guidelines for Future Neighborhood Parks

- Require larger developments to provide amenity areas
- Continue to plan and build walkable neighborhood parks
- Require neighborhood associations to manage on-going maintenance

Establish a Parks Board and a Parks Foundation

- Parks Board (network of champions for parks/grant funding)
- Parks Foundation (programming/volunteers/fundraising)

Parks Master Plan

- Existing Park
- School/Library
- Future Trail
- Future Park
- Existing Floodplain / Natural Area / Future Trail Corridor
- Town Square
- State Park / Future Pedestrian Entrance
- Planned Gateway / Pedestrian Entrance
- Future Park Location
- Water Body
- City Limits



Parks Master Plan

(Zoomed-In)

- | | |
|-------------------------------------|------------------------------------|
| 1. Pleasant Ridge Elementary School | 11. Arts & Enrichment Center |
| 2. Charlestown High School | 12. Flood Plain/Trail Corridor |
| 3. Family Activities Center | 13. Charlestown Middle School |
| 4. Little League Fields | 14. Planned Gateway Project |
| 5. Civic Center | 15. State Park Pedestrian Entrance |
| 6. Future Park/Trail Connection | 16. Future Park |
| 7. Clark County Library | 17. Future Trail Connections |
| 8. Jennings Elementary School | |
| 9. Greenway Park | |
| 10. Downtown Square | |



THANK YOU

Questions & Comments?